

| | | | |
|------|--|-------------|--|
| Date | | Project | |
| Type | | Part Number | |

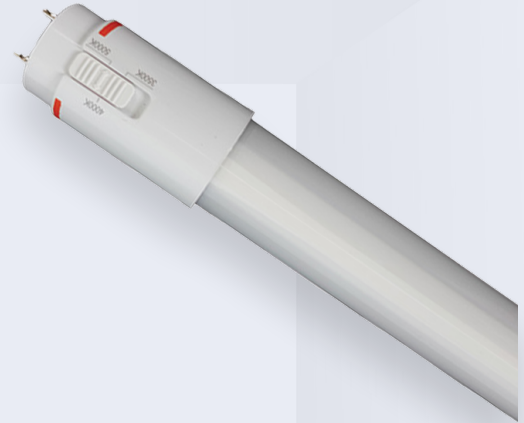


ALL-IN-ONE PERFORMANCE LIGHTING

TYPE A T8

Multi-CCT Type A T8 Tube

Make the switch to T8 Type A LED lamps for an effortless upgrade from fluorescent tubes to modern, energy-saving LED technology. Designed for plug-and-play compatibility with existing electronic ballasts, this LED tube offers instant brightness, reduced energy consumption, and a long lifespan of up to 50,000 hours. Perfect for offices, schools, hospitals, retail spaces, and warehouses, it provides uniform, flicker-free lighting with excellent color clarity.



PRODUCT FEATURES

- NSF Listed: NSF/ANSI Standard 2 - Food Equipment
- Direct plug-in & Safe Installation
- No UV or IR radiation
- High luminous efficiency
- Compatible with instant & programmed start ballast
- High luminous efficiency
- Operating temperature: -4°F to +113°F (-20°C to +45°C)
- CRI >83
- Rated Lifetime L70(hrs): >50,000
- 5 year warranty

KEY SPECIFICATIONS

| | |
|-------------------|---------------------|
| Lamp Base | G13 |
| Size | 2.0 – 3.0 ft |
| Wattage | 8 – 11W |
| Voltage | BF |
| CCT | 3500K, 4000K, 5000K |
| Lumens | 1325 – 1700 lm |
| CRI | 83+ |
| Beam Angle | 330° |
| Lifespan | 50,000 hrs |
| Dimming | No |

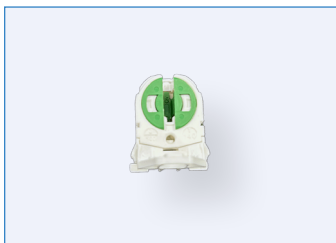
SPECIFICATIONS

| Order# | Model | Size | Wattage | Voltage | CCT | Lumens | CRI | Beam Angle |
|--------|---------------------------|--------|---------|---------|-------------|-------------------|-----|------------|
| R41027 | RENO-LEDT8BC-8W-MCCT-24G | 2.0 ft | 8W | BF | 35/40/5000K | 1325/1350/1350 lm | >83 | 330° |
| R41028 | RENO-LEDT8BC-11W-MCCT-36G | 3.0 ft | 11W | BF | 35/40/5000K | 1675/1700/1700 lm | >83 | 330° |

DLC CERTIFICATION

| Order# | Model | Application | DLC Standard | DLC Premium |
|--------|---------------------------|-------------------|--------------|-------------|
| R41027 | RENO-LEDT8BC-8W-MCCT-24G | Replacement Lamps | S-GGQX02 | – |
| R41028 | RENO-LEDT8BC-11W-MCCT-36G | Replacement Lamps | S-09SV7Q | – |

ACCESSORIES – MOUNTING

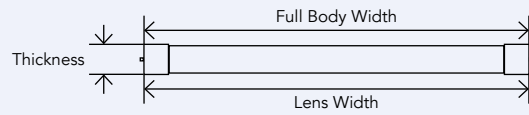


RENO-S-SN-U-PBT
 Low profile rotary lock
 T8 socket

| Order# | Model | Description |
|--------|--------------|-----------------------------------|
| R39301 | RENO-LBH-HPM | Low profile rotary lock T8 socket |

DIMENSIONS

2 FT



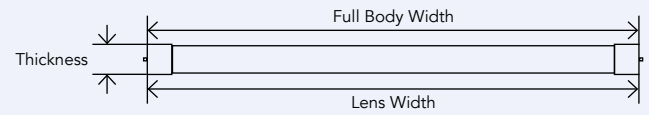
Full Body Width: 23.2" (589.3 mm)

Lens Width: 19.3" (490.2 mm)

Thickness: 1.1" (27.9 mm)

Weight: n/a

3 FT



Full Body Width: 35.2" (894.1 mm)

Lens Width: 31.4" (797.62 mm)

Thickness: 1.1" (27.9 mm)

Weight: n/a