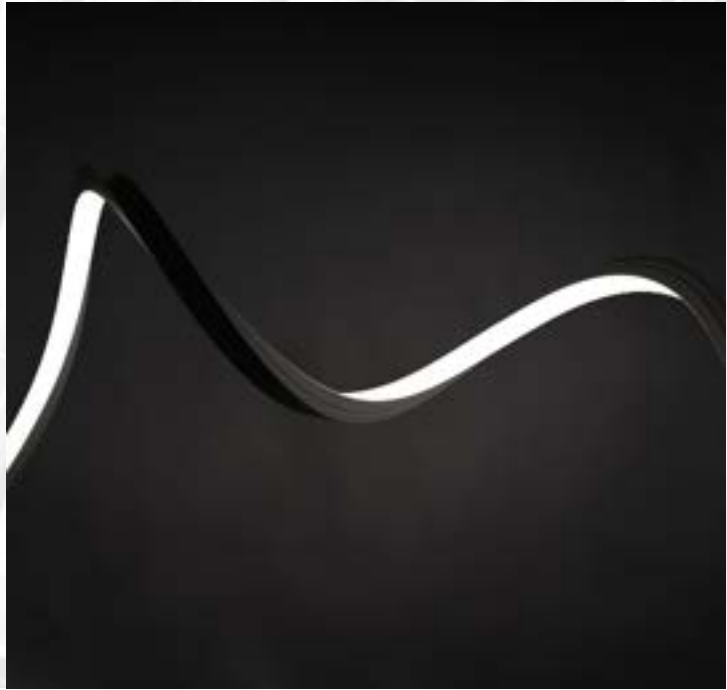




LUMAFLEX Series

Top Bend LED Neon Strip



The LUMAFLEX Series Top Bend LED Neon Strip is a unique vertical bending direction curves across the top of the flat light surface and is perfect for circles, contours and side-emitting light. The flexible, square shaped silicone encapsulated diffuser shines a vivid line of light with a 120° beam distribution. It is ideal for building outlines, facades, signage and exterior architectural accents.



Product Features

- High-efficacy, up to 244 lm/ft
- Dot-free illumination
- Dimmable with with PWM signal
- Sleek, square-shaped linear profile
- Flexible vertical bending for creative illumination
- Versatile, field-cuttable (at any length) installation and endcaps sealed by gluing process
- Three connector options: tail, side, and bottom
- Mounted via Brackets or Aluminum Channel
- IK08 impact rated, IP67 rated, and saltwater resistant
- Operating temp: -4°F to +113°F (-20°C to +45°C)
- Rated lifetime L70: >50,000 hours
- UL listed and RoHs Compliant

Key Specifications

Voltage	24V DC
Wattage	4.27W/ft
Roll Length	16.4ft (5.0 m)
Cut Distance	Any length
CCT	2700K, 3000K, 4000K
CRI	90
Lumens	Up to 244 lm/ft
Beam Angle	120°
Wire Length	11.8" (300 mm) - tail, side or bottom connector
Mounting	8 mounting brackets (included) Aluminum Channel mounting (optional)





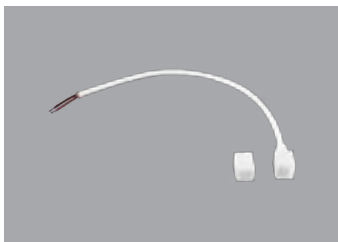
LUMAFLEX Series | Top Bend LED Neon Strip

ARCHITECTURAL LUMINAIRES BY  **RENO**
LIGHTING

Specifications

Order#	Model	Wattage	Voltage	Lumens	CCT	CRI	Bend Type
R11001	RENO-NEON-5M-14W-27K-24V-13MM-AF-TOP	4.27W/ft	24V	220 lm/ft	2700K	90	Vertical
R11003	RENO-NEON-5M-14W-30K-24V-13MM-AF-TOP	4.27W/ft	24V	232 lm/ft	3000K	90	Vertical
R11005	RENO-NEON-5M-14W-40K-24V-13MM-AF-TOP	4.27W/ft	24V	244 lm/ft	4000K	90	Vertical

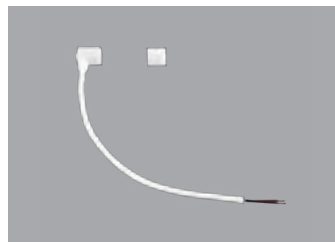
Accessories



R19001
RENO-NEON-13MM-EP-RF
Tail Feed with cap



R19002
RENO-NEON-13MM-EP-RF
Side Feed with cap



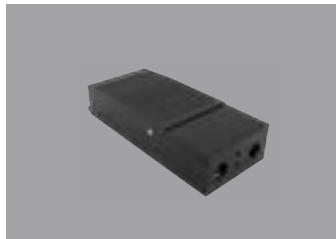
R19003
RENO-NEON-13MM-EP-RF
Bottom Feed with cap



R19011
RENO-NEON-13MM-EP-RF
4' Aluminum Channel
(2 Brackets included)



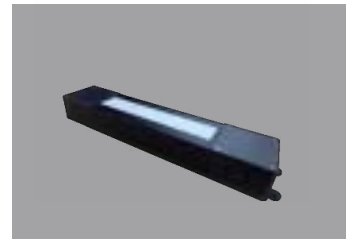
R19012
RENO-SG-NEON
Silicone Glue



R84001
RENO-HBL096-DC24V
96W/24V Dimmable LED Driver



R84002
RENO-HBL200-DC24V
200W/24V Dimmable LED Driver



R84003
RENO-HBL096-DC24V-EX
96W/ 24V Dimmable LED Driver
Wet Location

Order#	Model	Description
R19001	RENO-NEON-13MM-EP-RF	Power cable in tail feed, 11.8" (300 mm) length
R19002	RENO-NEON-13MM-EP-SF	Power cable in side feed, 11.8" (300 mm) length
R19003	RENO-NEON-13MM-EP-BF	Power cable in bottom feed, 11.8" (300 mm) length
R19011	RENO-NEON-AP-13M-4FT	4' Aluminum Channel with Brackets
R84001	RENO-HBL096-DC24V	96W/24V Dimmable LED Driver
R84002	RENO-HBL200-DC24V	200W/24V Dimmable LED Driver
R84003	RENO-HBL096-DC24V-EX	96W/24V Wet Location Dimmable LED Driver
R19012	RENO-SG-NEON	Silicone Glue for waterproof feed connections (10ml)



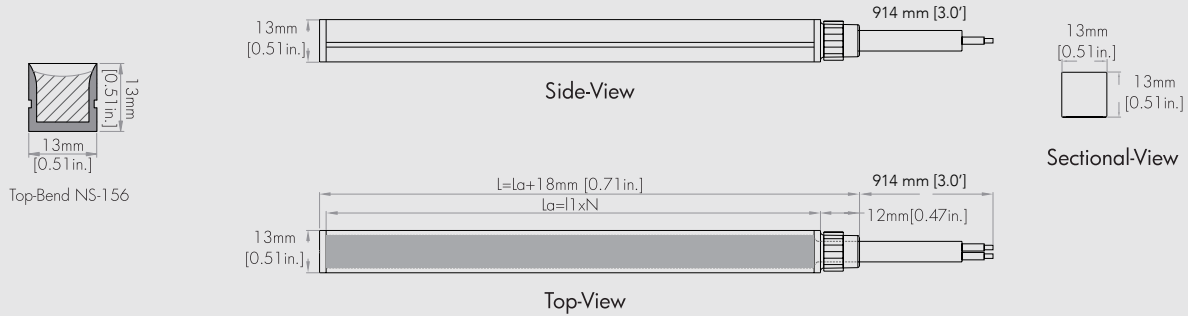


LUMAFLEX Series | Top Bend LED Neon Strip

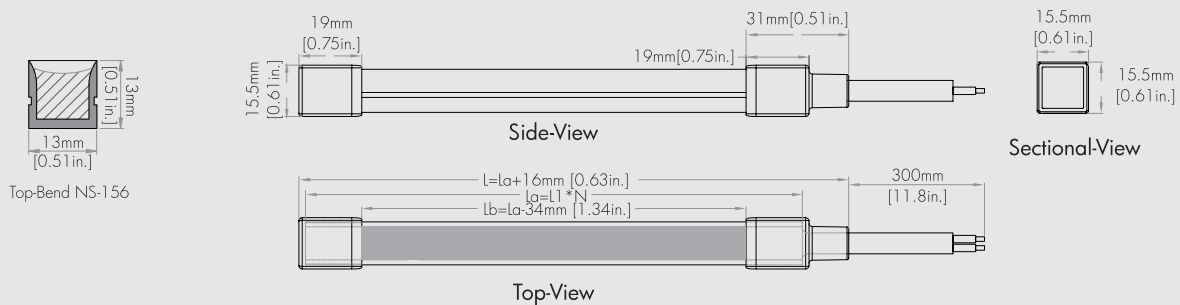
ARCHITECTURAL LUMINAIRES BY RENO LIGHTING

Dimensions

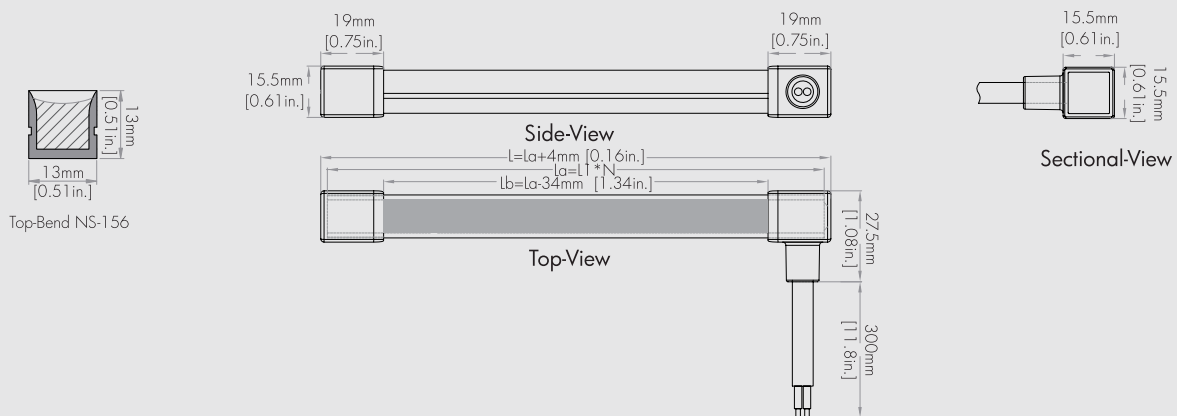
Power Entry from the Tail with 3' Cord (Included)



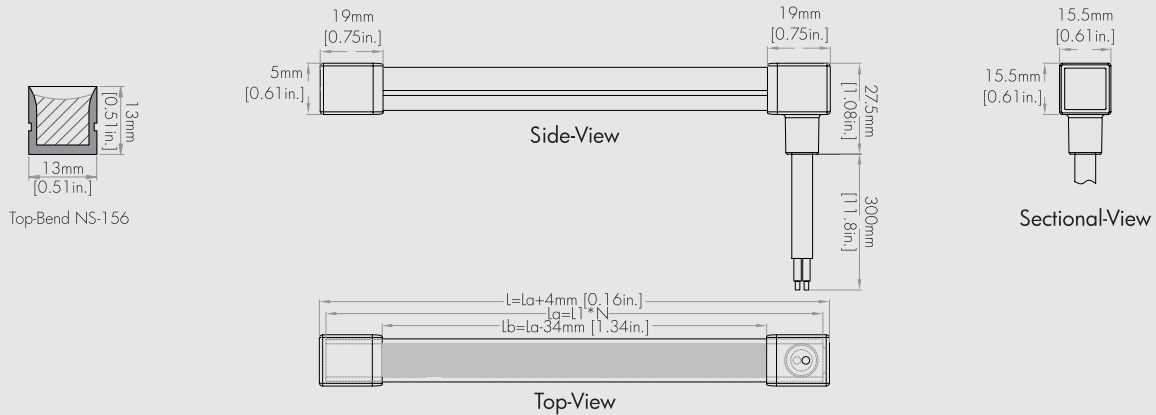
Power Entry from the Tail (Optional)



Power Entry from the Side (Optional)

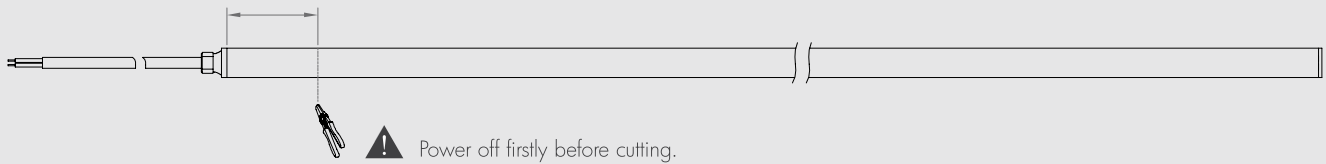


Power Entry from the Bottom Optional

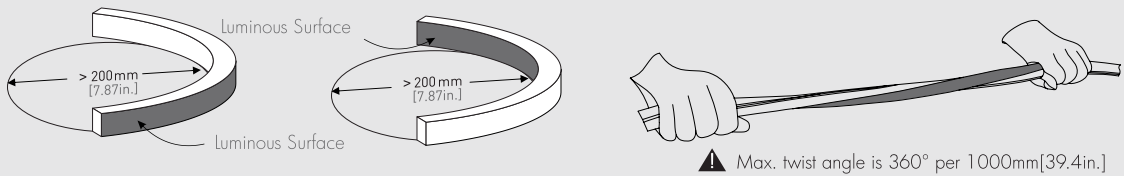


Install Options

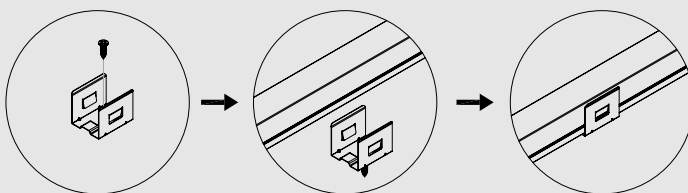
Free-cutting at any length for static CCT models



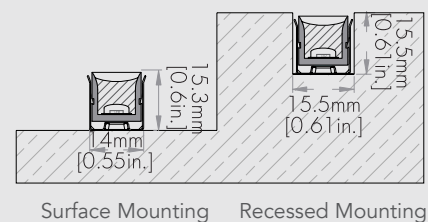
Bending Instructions



Fixed by Bracket & Screw



Space & Groove are shown as below

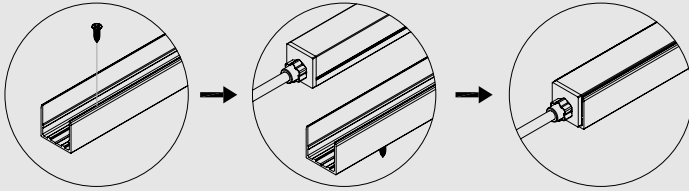




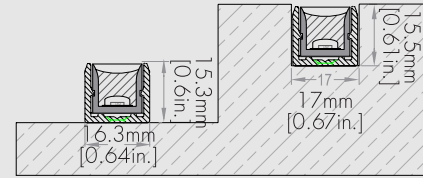
LUMAFLEX Series | Top Bend LED Neon Strip

ARCHITECTURAL LUMINAIRES BY RENO LIGHTING

Fixed by Aluminum profile & Screw



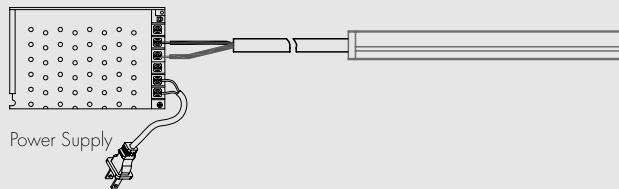
Space & Groove are shown as below



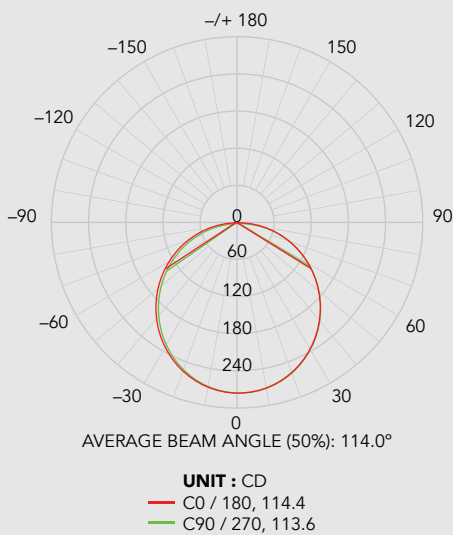
Surface Mounting Recessed Mounting

Connections

White, Non-Dimmable Status



Photometrics



Flux out: 588.9 lm			Diameter
Height	Evag, Emax		
1 m	79.06, 275.91x		305.13 cm
2 m	19.76, 68.981x		610.27 cm
3 m	8.794, 30.661x		915.40 cm
4 m	4.941, 17.241x		1220.53 cm
5 m	3.162, 11.041x		1525.66 cm
6 m	2.196, 7.6641x		1830.80 cm
7 m	1.613, 5.6311x		2135.93 cm
8 m	1.235, 4.3111x		2441.06 cm
9 m	0.9760, 3.4061x		2746.20 cm
10 m	0.7906, 2.7591x		3051.33 cm

Angle: 113.51°

