



ARRAY SERIES
ARCHITECTURAL STRIPS
GENERATION 2

UNLEASH YOUR LINEAR CONCEPT



Illuminate structures like never before with the **ARRAY SERIES** Architectural Direct/Indirect Linear Strip System. This configurable linear strip system offers the freedom to craft both smooth, fluid curves and precise angular bends.

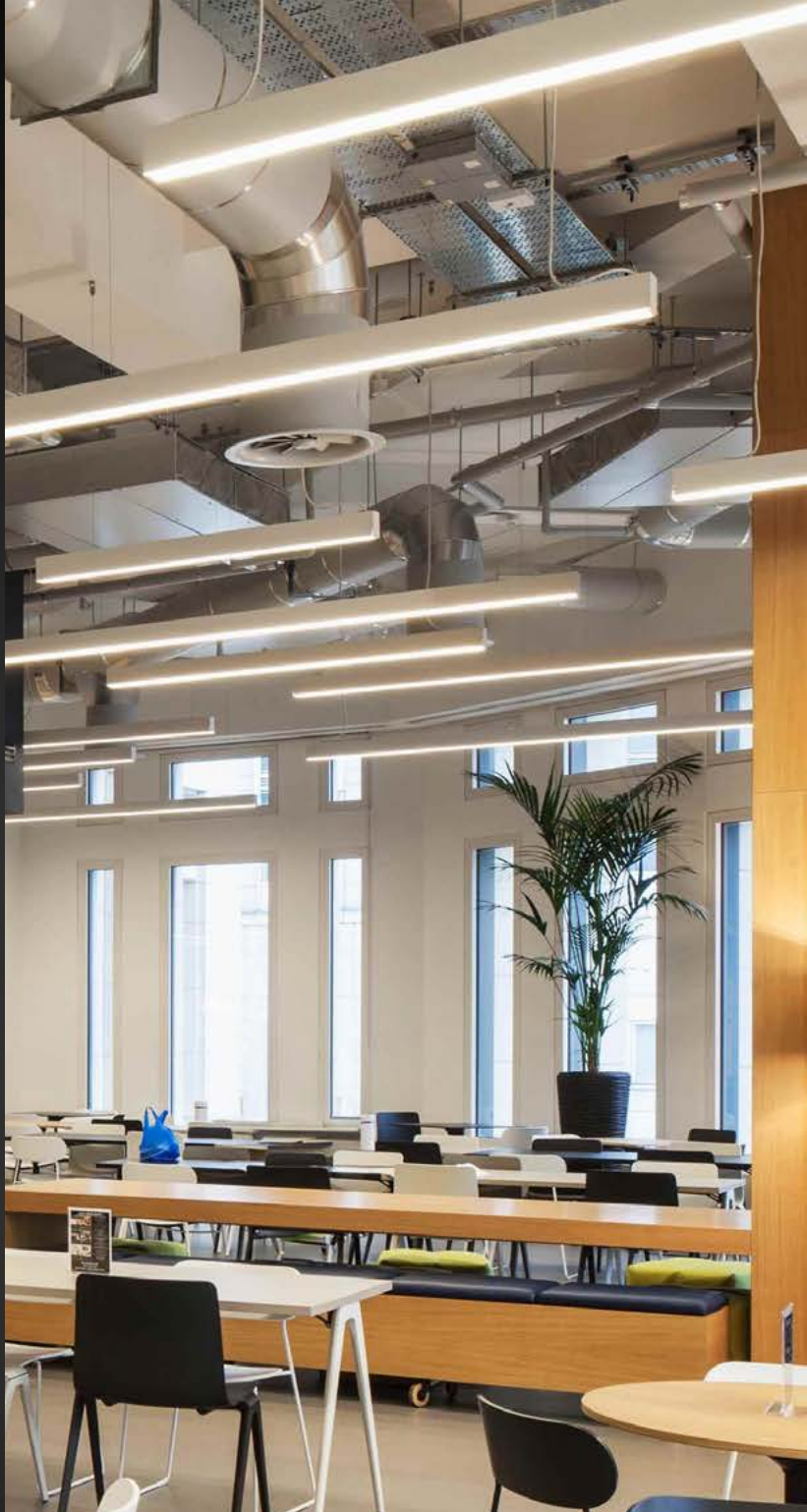
Whether a designer seeks the organic grace of natural forms or the geometric precision of modern design, the **ARRAY SERIES** adapts seamlessly to their vision, resulting in a innovative design of light.

LAUNCH YOUR CREATIVE APPROACH

Used individually in a linear design, imagined as a circular or round beam of light, or constructed to provide an impression of geometric strength, there is no limit to turning your architectural canvas into illuminated fuel for the senses.

KEY FEATURES

- Up to 1,620 lm/ft
- Four field-selectable CCTs (30/35/40/5000K)
- Direct/Indirect (70%/30%) option
- >90 CRI
- Wide range of layout configurations using luminous connectors
- Fully luminous corners and transition pieces
- Suspension, Recessed, and Wall Mount installation options



INTENTIONALLY LINEAR

Position individual linear luminaires in an intentional asymmetrical design to provide a dynamic sense of motion and energy, or arrange them in parallel mirror patterns to modify spatial perception to create the illusion of infinite space.



CURVED ORGANIC BEAUTY

Effortlessly create seamless, flowing forms that emulate the gentle arcs of a cloud or the circular contour of golden rings. The smooth lines of curved shapes impart a sense of a movement and harmony, making them perfect for adding a sophisticated, illuminated flair to your environment.



SHARP, STRIKING BRILLIANCE

Straight bend shapes, characterized by their sharp angles and defined lines, bring a sense of precision and modernity to any space. Create geometric forms with a bold, cutting-edge aesthetic to showcase the structured elegance of contemporary design.



A NEW GENERATION ARCHITECTURAL STRIP SYSTEM

Put your creative concepts on overdrive with our new generation of Architectural Strips by utilizing angular and curved connectors, upper luminous modules, and a variety of mounting kits to create a fully seamless, luminous design that elevates the ambiance of any space.

2 FT ARCHITECTURAL STRIPS

| Order# | Model Number | Watts | Voltage | Efficacy | CRI | CCT | Finish |
|--------|-----------------------------|-----------------|----------|----------|-----|----------------------|--------|
| R33211 | RENO-TLSN2-DV-MCCT-MW-WH-G2 | 30W / 40W / 50W | 120–347V | 130 lm/W | >80 | 30 / 35 / 40 / 5000K | White |
| R33214 | RENO-TLSN2-DV-MCCT-MW-WH-G2 | 30W / 40W / 50W | 120–347V | 130 lm/W | >80 | 30 / 35 / 40 / 5000K | Black |

4 FT ARCHITECTURAL STRIPS

| Order# | Model Number | Watts | Voltage | Efficacy | CRI | CCT | Finish |
|--------|-----------------------------|-----------------|----------|----------|-----|----------------------|--------|
| R33212 | RENO-TLSN4-DV-MCCT-MW-WH-G2 | 30W / 40W / 50W | 120–347V | 130 lm/W | >80 | 30 / 35 / 40 / 5000K | White |
| R33215 | RENO-TLSN4-DV-MCCT-MW-WH-G2 | 30W / 40W / 50W | 120–347V | 130 lm/W | >80 | 30 / 35 / 40 / 5000K | Black |

8 FT ARCHITECTURAL STRIPS

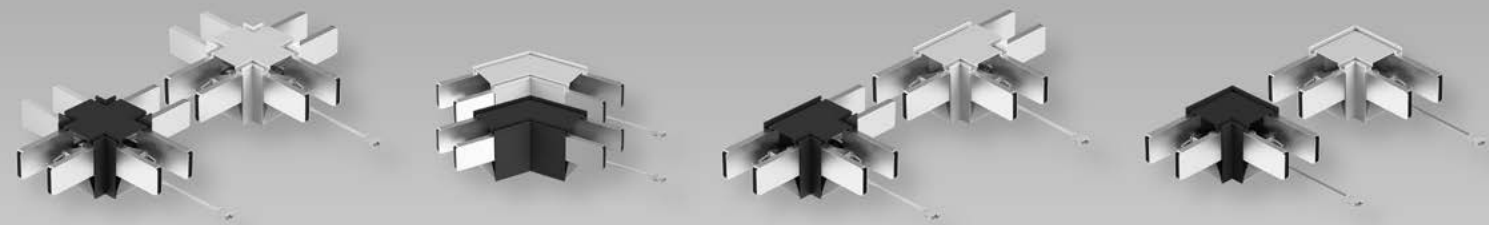
| Order# | Model Number | Watts | Voltage | Efficacy | CRI | CCT | Finish |
|--------|-----------------------------|-----------------|----------|----------|-----|----------------------|--------|
| R33213 | RENO-TLSN8-DV-MCCT-MW-WH-G2 | 30W / 40W / 50W | 120–347V | 130 lm/W | >80 | 30 / 35 / 40 / 5000K | White |
| R33216 | RENO-TLSN8-DV-MCCT-MW-WH-G2 | 30W / 40W / 50W | 120–347V | 130 lm/W | >80 | 30 / 35 / 40 / 5000K | Black |



UPGRADED FEATURES

- **Lower UGR:** A new Prismatic Diffuser provides a lower Unified Glare Rating (22), reducing the risk of glare while improving uniformity.
- **Higher-Efficiency LEDs:** Improved LED beads increases efficacy to 130 lm/W (from 115 lm/W) qualifying for a wider range of energy incentives.
- **Improved Installation Interface:** An improved interface makes it easier to connect, and provides a more robust overall structure.
- **Robust Splicing Interfaces:** A new quick connect splicing interface ensures electrical continuity and secure physical connections when joining each strip together.
- **Select from Four CCTs:** Added 3500K, allowing users to select from four CCTs directly in the field.

ANGULAR LUMINOUS CONNECTORS



| Order# | Description | Order# | Description | Order# | Description | Order# | Description |
|--------|---------------------|--------|---------------------|--------|---------------------|--------|-----------------------|
| R39425 | X-Connector (White) | R39427 | V-Connector (White) | R39426 | T-Connector (White) | R39424 | 90° Connector (White) |
| R39437 | X-Connector (Black) | R39439 | V-Connector (Black) | R39438 | T-Connector (Black) | R39436 | 90° Connector (Black) |

CURVED LUMINOUS CONNECTORS



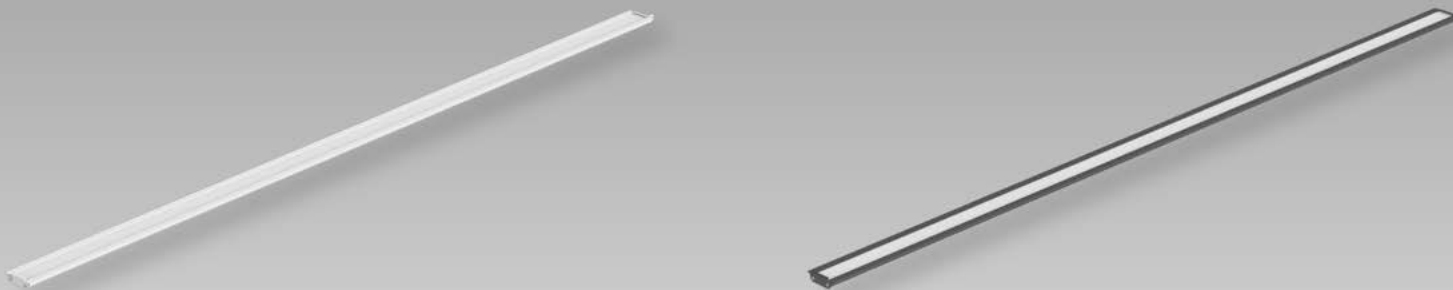
| Order# | Description | Order# | Description |
|--------|----------------------------|--------|-------------------------------|
| R39441 | Half Arc Connector (White) | R39443 | Quarter Arc Connector (White) |
| R39442 | Half Arc Connector (Black) | R39444 | Quarter Arc Connector (Black) |

MOUNTING KITS & ACCESSORIES

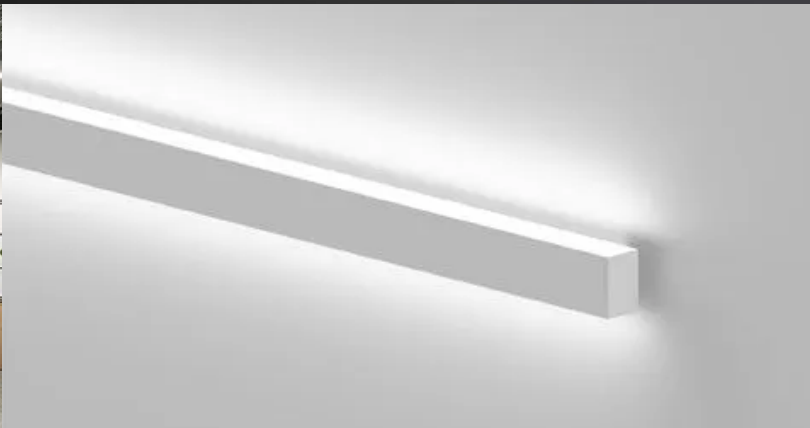


| WALL / SURFACE | | RECESSED | | SUSPENSION / CANOPY | | CONNECTION LENS | |
|----------------|----------------------|----------|--------------|---------------------|--------------------|-----------------|---|
| Order# | Description | Order# | Description | Order# | Description | Order# | Description |
| R59454 | 2ft Wall Mount Frame | R39409 | Mounting Kit | R39407 | Suspension Kit | R39440 | Seamless Connection Lens [98ft (30m) /roll] |
| R59455 | 4ft Wall Mount Frame | | | R39412 | Canopy Kit (White) | | |
| R39411 | Surface Mount Kit | | | R39419 | Canopy Kit (Black) | | |
| R39408 | Linear Connector Kit | | | | | | |

UPPER LUMINOUS MODULES



| Order# | Description | Order# | Description | Order# | Description |
|--------|------------------------|--------|-------------------------|--------|-------------------------|
| R39401 | 2 ft 7W Module (White) | R39402 | 4 ft 12W Module (White) | R39403 | 8 ft 15W Module (White) |
| R39413 | 2 ft 7W Module (Black) | R39414 | 4 ft 12W Module (Black) | R39415 | 8 ft 15W Module (Black) |

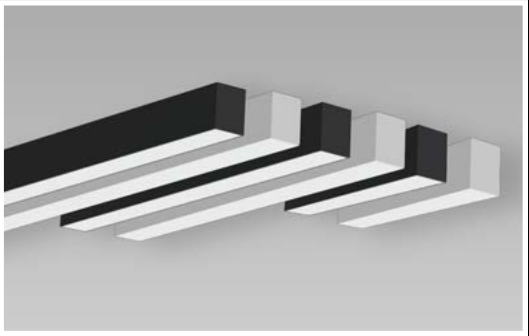


CONFIGURE

Your Concept

LED LINEAR STRIP LIGHT

- A 8 ft Linear Strip
- B 2 ft Linear Strip
- C 4 ft Linear Strip



SUSPENSION MOUNTED CONFIGURATION

CEILING MOUNTED CONFIGURATION

WALL MOUNTED CONFIGURATION

LEGEND

- | | | | |
|-------------------------|----------------------|-------------------------|-----------------|
| 1 90° Connector | 2 "X" Connector | 3 "T" Connector | 4 "V" Connector |
| 5 Quarter Arc Connector | 6 Half Arc Connector | | |
| 7 Pendant Mounting Kit | 8 Wall Mounting Kit | 9 Recessed Mounting Kit | |





905-604-4666
info@renolighting.com
www.renolighting.com



9133 Leslie St. #120
Richmond Hill, ON
L4B 4N1 Canada