

Date		Project	
Type		Part Number	

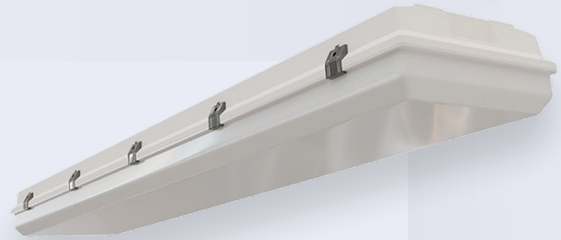


ALL-IN-ONE PERFORMANCE LIGHTING

MAKO Series

Vapor Tight Highbay

Engineered for tough industrial and commercial spaces, this LED Vapor Tight Highbay combines high performance with exceptional durability. Featuring an IP66 rating for total dust and water protection, it's built to withstand harsh conditions. Certified NSF for food safety and hygiene, it's perfect for environments where cleanliness matters. With NEMA 4X protection, this light is resistant to dust, dirt, and water. The IK10 impact resistance ensures it can endure heavy impacts, making it the ideal solution for warehouses, factories, and other demanding settings.



PRODUCT FEATURES

- IP66, NSF, NEMA 4X rating
- IK10-Rating which ensures protections against 20 joules impact
- Stainless Steel Clips
- V-Hooks and J-Adaptors are included
- Durable PC housing and cover
- Semi frosted PMMA lens
- Rated Lifespan: L70 ~100,000 hrs
- Operating temperature: -40°F to +122°F (-40°C to +50°C)
- 10 year limited warranty

KEY SPECIFICATIONS

Voltage	120-347V
Wattage	Selectable - 145W / 175W / 220W
Length	4FT
Power Factor	>0.9
CCT	3500K, 4000K, 5000K
CRI	<80
Lumens	Up to 37,400 lm
Beam Angle	120°
Dimming	0-10V
Mounting	Surface, Suspended
Applications	Commercial, Warehouse, Food Facilities


 EMERGENCY
BACKUP READY

 RENO SMART
NLC SYSTEM

 STANDALONE
SENSOR OPTIONS


SPECIFICATIONS – MULTI POWER (145/175/220W)

Order#	Model	Wattage	Voltage	Lumens	Efficacy	CCT
R33121	RENO-WLVP4-MW-DVMCCT-HL	145/175 220W	120-347V	24,650/29,750/ 37,400lm	170 lm/W	3500/4000/5000K

DLC CERTIFICATION

Order#	Model	Application	DLC Standard	DLC Premium
R33121	RENO-WLVP4-MW-DVMCCT-HL	Direct Linear Ambient Luminaires	S-VXKR2J	–
		High-Bay Luminaires	–	S-2T82PJ
		Stairwell and Passageway	–	S-N413KT

ACCESSORIES – MOUNTING



R39204
 RENO-RP
 Aircraft Cables for Suspension

Order#	Model	Description
R39204	RENO-RP	Aircraft Cables for Suspension

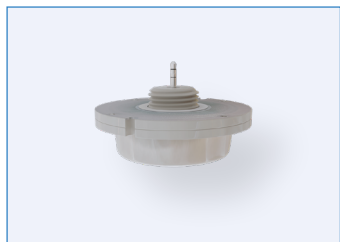
ACCESSORIES – EMERGENCY LED DRIVERS



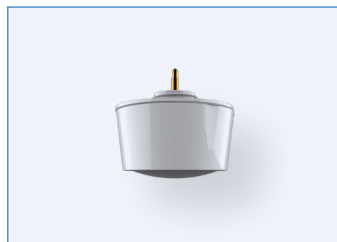
R83002
RENO-EM-H25
Emergency LED Driver
(100-347V AC, 50-60Hz, 25W)

Order#	Model	Description
R83002	RENO-EM-H25	Emergency LED Driver (100-347V AC, 50-60Hz, 25W)

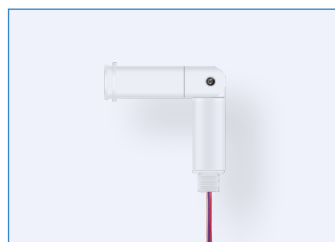
ACCESSORIES – STANDALONE SENSOR & REMOTES



R71002
RENO-SENSOR-MW-H
Bi-level dim sensor for linear
Highbays



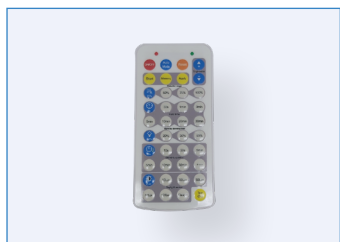
R74004
RENO-SENSOR-PIR3.5-PH15M
Long Detection Range PIR
Sensor



R73005
RENO-RS-JK-AD-CORD-L
Hardwire " L " Angle Adaptor



R73002
RENO-REMOTE-H
Controller for bi-level sensor
(with screen)



R73005
RENO-REMOTE-H-ECO
Remote controller for Highbays
(without screen)

Order#	Model	Description
R71002	RENO-SENSOR-MW-H	Bi-level dim sensor for linear Highbays
R74004	RENO-SENSOR-PIR3.5-PH15M	Long Detection Range PIR Sensor
R75103	RENO-RS-JK-AD-CORD-L	Hardwire Adjustable "L" Angle Adaptor for 3.5mm Jack Sensors
R73002	RENO-REMOTE-H	Remote Control for Standalone Sensors (With Screen) Note: Only 1 needed per project.
R73005	RENO-REMOTE-H-ECO	Remote Control for Standalone sensors (Without Screen) Note: Only 1 needed per project

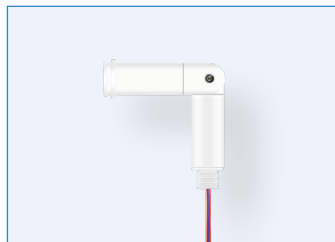
ACCESSORIES – RENO SMART NLC SENSORS



R75001
RENO-RS-JK-BPDN-12V
Bluetooth 3.5mm Jack PIR
Sensor for RENO Smart NLC
System



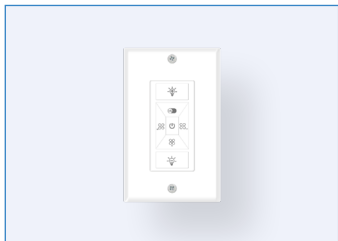
R75002
RENO-RS-JK-BMWM-12V
Bluetooth 3.5mm Jack
Microwave Sensor for RENO
Smart NLC System



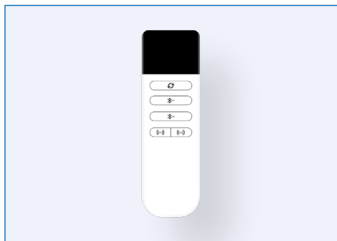
R73005
RENO-RS-JK-AD-CORD-L
Hardwire " L " Angle Adaptor



R75201
RENO-RS-GW-BCNW
Ceiling Mounted Gateway for
RENO Smart NLC System



R75302
RENO-RS-RC-BNNG
7-Key Smart Wall Switch for
RENO Smart NLC System



R75301
RENO-RS-RC-BNNN
5-Key Reset Remote Controller

Order#	Model	Description
R75001	RENO-RS-JK-BPDN-12V	Bluetooth 3.5mm Jack PIR Sensor for RENO Smart NLC System
R75002	RENO-RS-JK-BMWM-12V	Bluetooth 3.5mm Jack Microwave Sensor for RENO Smart NLC System
R73005	RENO-RS-JK-AD-CORD-L	Hardwire Adjustable "L" Angle Adaptor for 3.5mm Jack Sensors
R75201	RENO-RS-GW-BCNW	Ceiling Mounted Gateway for RENO Smart NLC System
R75302	RENO-RS-RC-BNNG	7-Key Smart Wall Switch for RENO Smart NLC System
R75301	RENO-RS-RC-BNNN	5-Key Reset Remote Controller

DIMENSIONS

