

INSTRUCTIONS FOR THE FOLLOWING FIXTURES

Order	Model	Voltage	Wattage	CCT
R55031	RENO-PTL-DV-MW-MCCT-BK	120-347V	40 / 60 / 80 / 100W	30 / 40 / 5000K



OVERVIEW

WHAT'S INCLUDED

- Lantern Fixture

TOOLS REQUIRED (NOT INCLUDED)

- Wiring supplies as per national and local electrical codes
- Hardware/tools required to mount to structure (field provided)

IMPORTANT

- Before installing fixture, read all instructions and retain for future reference. The important instructions and safeguards that appear in this document are not inclusive of all possible conditions and situations that may occur. It must be understood that common sense, caution, and care are factors that cannot be built into a product. These factors must be supplied by those that care and operate the fixture.

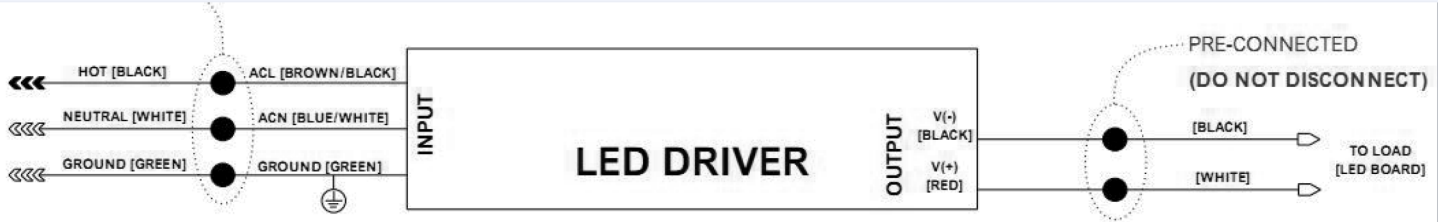
WARNING & SAFETY

- Risk of electric shock!
- Ensure power is OFF at the electrical panel before starting installation or maintenance
- Verify site supply voltage matches luminaire product label
- Ensure the cover is closed during operation
- Modifications to the product will void warranty
- Ambient temperature range under normal operation not to exceed;
 - -40°F to +117°F (-40°C to +45°C) fixture
- Wiring to fixture must be in accordance with the National Electrical Code and all applicable local electrical and safety regulations
- Min 90°C supply conductors



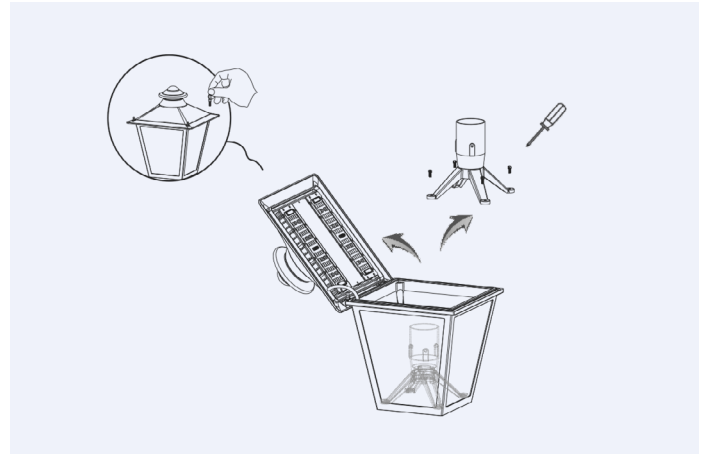
FOR ADDITIONAL INFORMATION REQUIRED NOT COVERED IN THIS DOCUMENT PLEASE CONTACT A LOCAL REPRESENTATIVE!

WIRING SCHEMATICS

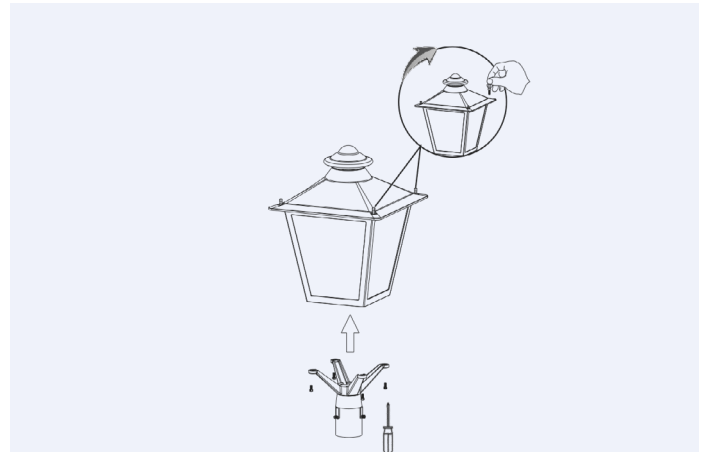


INSTALLATION INSTRUCTIONS

#	Step
1	Remove four screws from the top lid
2	Open it and remove the slipfitter base

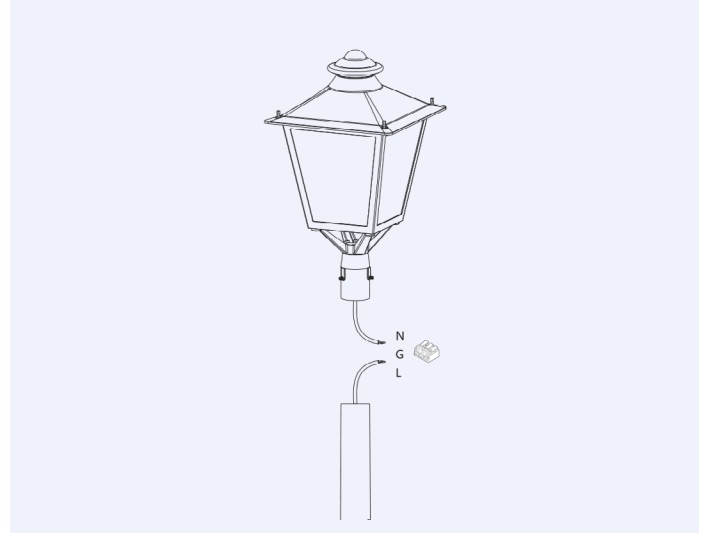


#	Step
3	Insert the cord through the center of the mount base
4	Attach the mount base to the bottom of the fixture
5	Align the screw holes and secure it
6	Close the top lid and tighten the screws

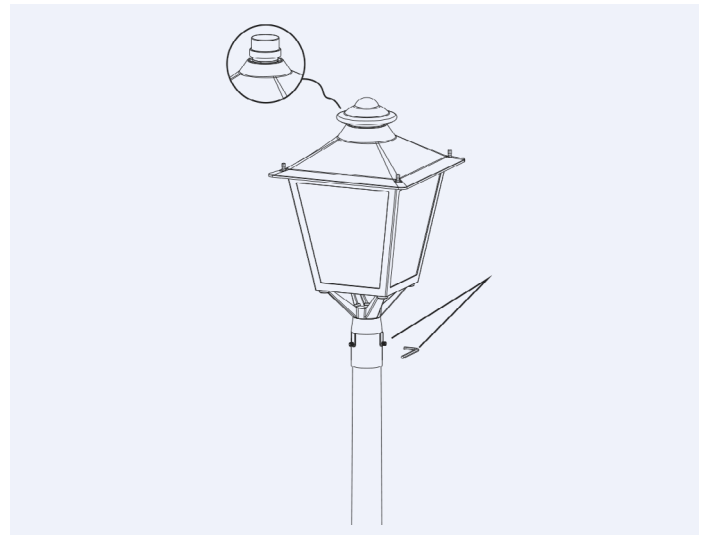


INSTALLATION INSTRUCTIONS

#	Step
7	Connect the ACL and the ACN from the driver to the conduit with the AC power supply cords
8	Follow the wiring schematics on page 1



#	Step
9	Slip the fixture over the pole and secure the three screws on the mount base



CHANGING LIGHT DISTRIBUTION

#	Step
1	Remove four screw on top lid of fixture
2	Open the top lid, you can see two pcs of lens are installed in opposite directions (T5)
3	Remove the screws from the lens (the right one), then turn lens on the right to the same direction as the left lens (T3)
4	Put the screws back in the lens, tighten the screws
5	Close the lid and tighten the four screws on the top of the fixture

