

**INSTRUCTIONS FOR THE FOLLOWING FIXTURES:****ORDER#****MODEL#**

R39540	RENO-CIRSUS-CANOPY-2-WH
R39541	RENO-CIRSUS-CANOPY-2-BK
R39542	RENO-CIRSUS-CANOPY-3-WH
R39543	RENO-CIRSUS-CANOPY-3-BK

**WARNING**

To avoid the risk of fire, or electric shock this product should be installed, inspected, and maintained by a qualified electrician only. Installation should be completely by an individual familiar with the construction and operation of the luminaire. Installation of luminaire must be in accordance with nation and local building and electrical codes.

**Safety Warning:**

To avoid electric shock:

Be certain electrical power is OFF before and during installation and maintenance.

Luminaire must be supplied by a wiring system with an equipment grounding conductor.

To avoid burning hands:

Make sure lens and housing are cool when performing maintenance.

To avoid product degradation:

Make sure the wire supply voltage is the same as the luminaire supply

Use proper supply wiring as specified on the luminaire nameplate.

Avoid use in environments containing sulfur, chlorine, or other halides, methyl acetate or ethyl acetate, cyanoacrylates, glycol ethers, formaldehyde or butadiene.

**Notes:**

Instructions do not cover all details and all possible product configurations.

Do not restrict luminaire ventilation.

Ensure LED luminaire is not covered with material that will prevent convection or conduction cooling.

Ensure LED luminaire has the correct polarity before installation

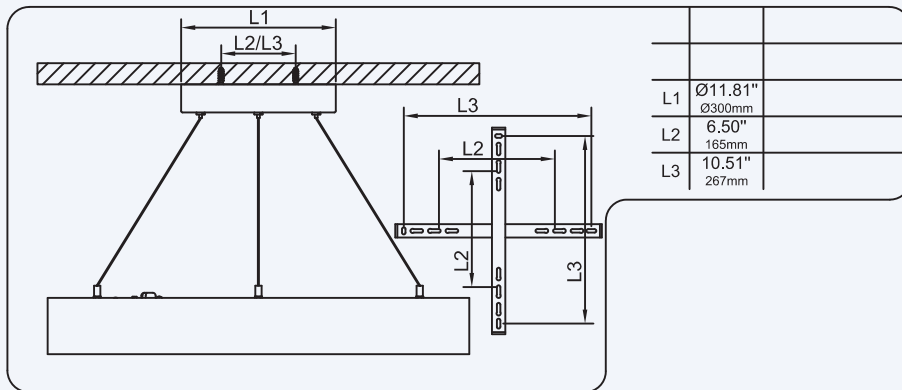
Avoid exposing wiring to metal edges and sharp objects.

**Maintenance:**

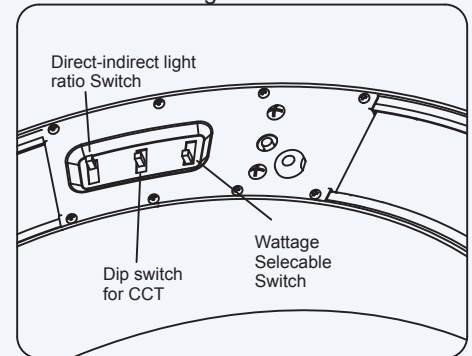
Perform visual, electrical, and mechanical inspections on a regular basis. The environment and frequency of use should determine this. However, it is recommended that checks be made at least once a year. Electrically check to make sure that all connections are clean and tight. Mechanically check that all parts are properly assembled.



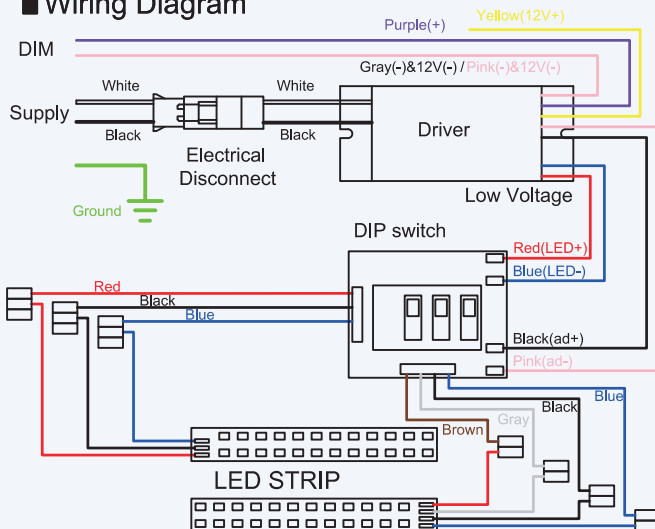
## INSTALLATION DIMENSIONS



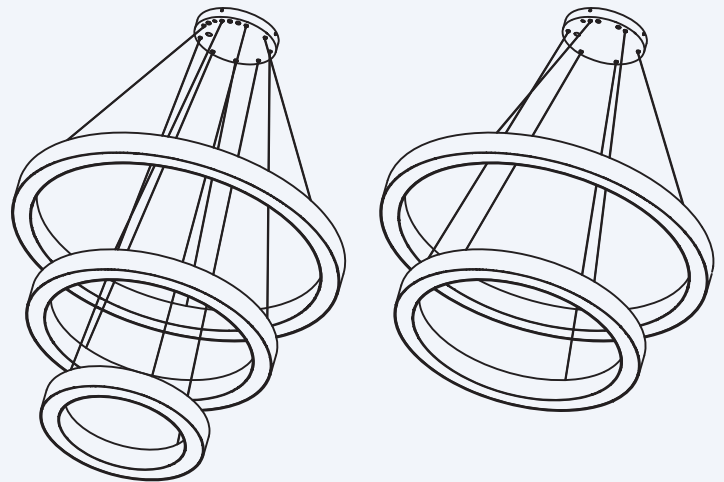
■ Dip switch for CCT & Wattage Selectable Switch & Direct-indirect light ratio Switch



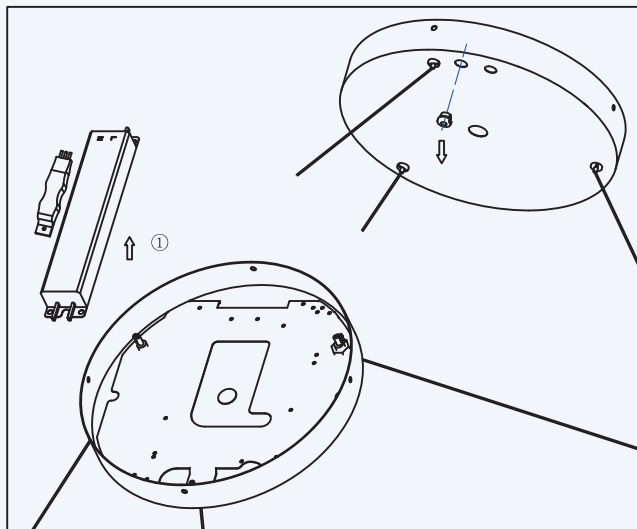
### ■ Wiring Diagram



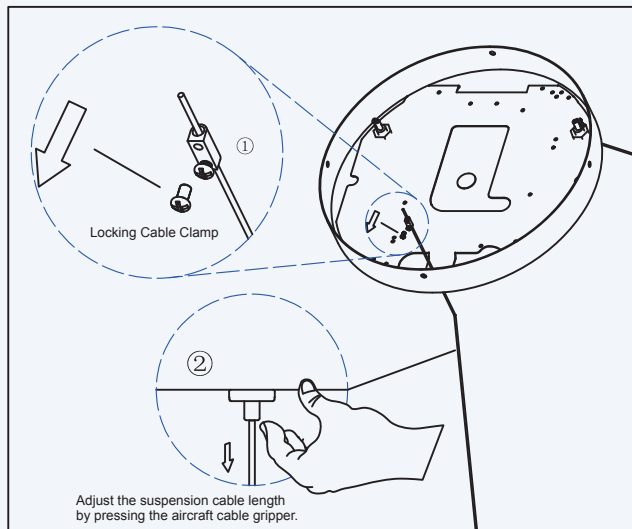
### ■ SUSPENDED MOUNT



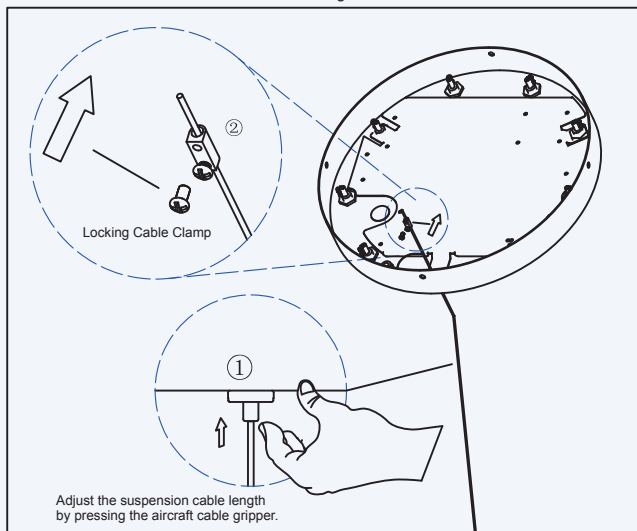
## SUSPENDED MOUNT



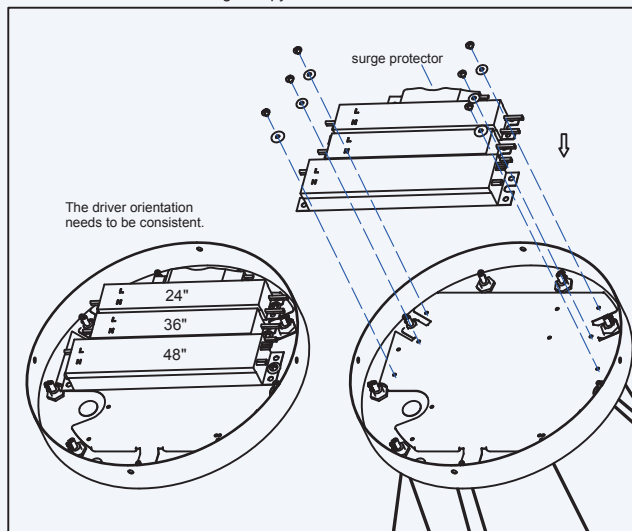
A) Remove the driver and surge protector from the existing canopy first, then remove the strain relief and DC wiring.



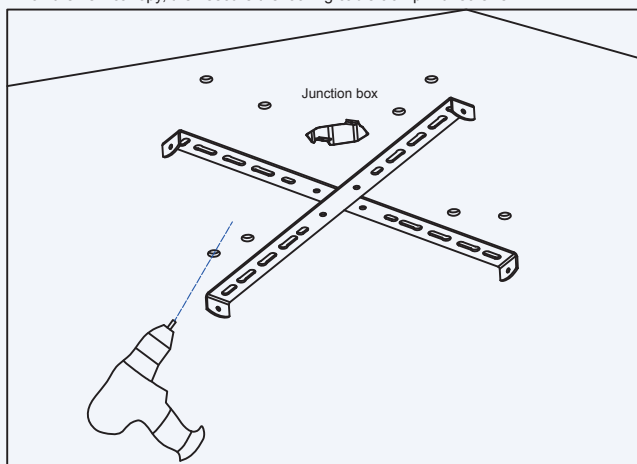
B) Loosen the locking cable clamp, then remove the aircraft cable, and discard the existing canopy.



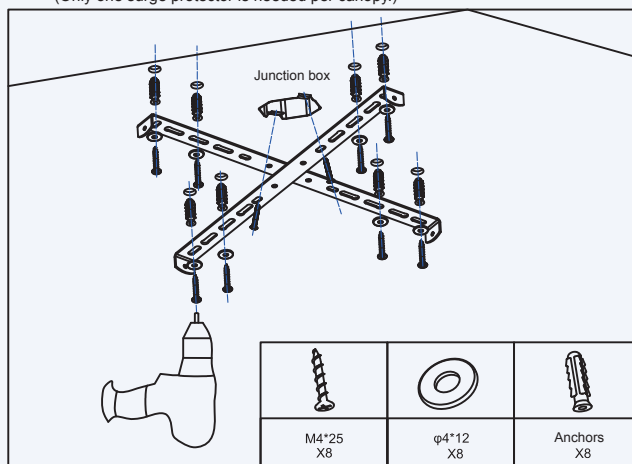
C) The fixture's aircraft cable passes through the gripper and locking cable clamp on the new canopy, then secure the locking cable clamp with screws.



D) Install the driver, surge protector, and DC wire onto the new canopy. (Only one surge protector is needed per canopy.)



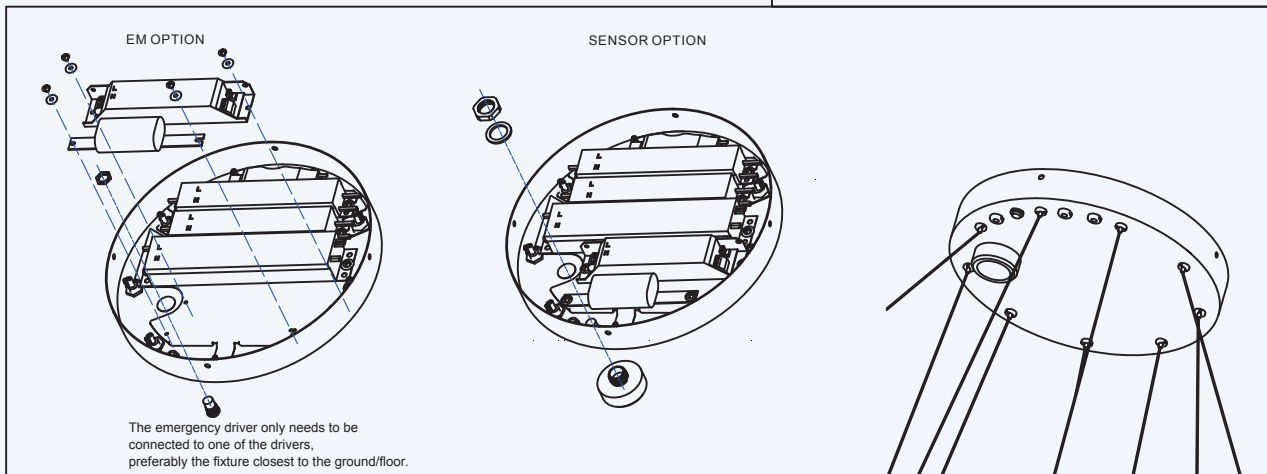
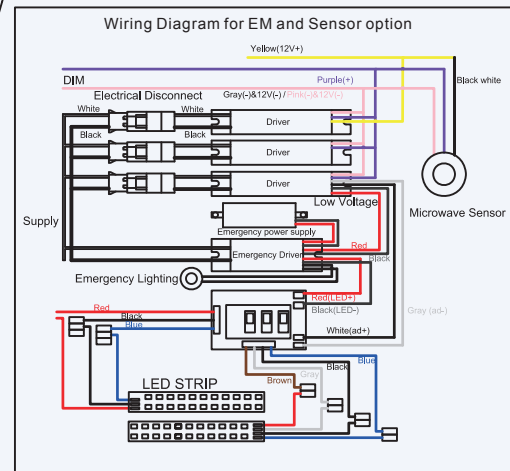
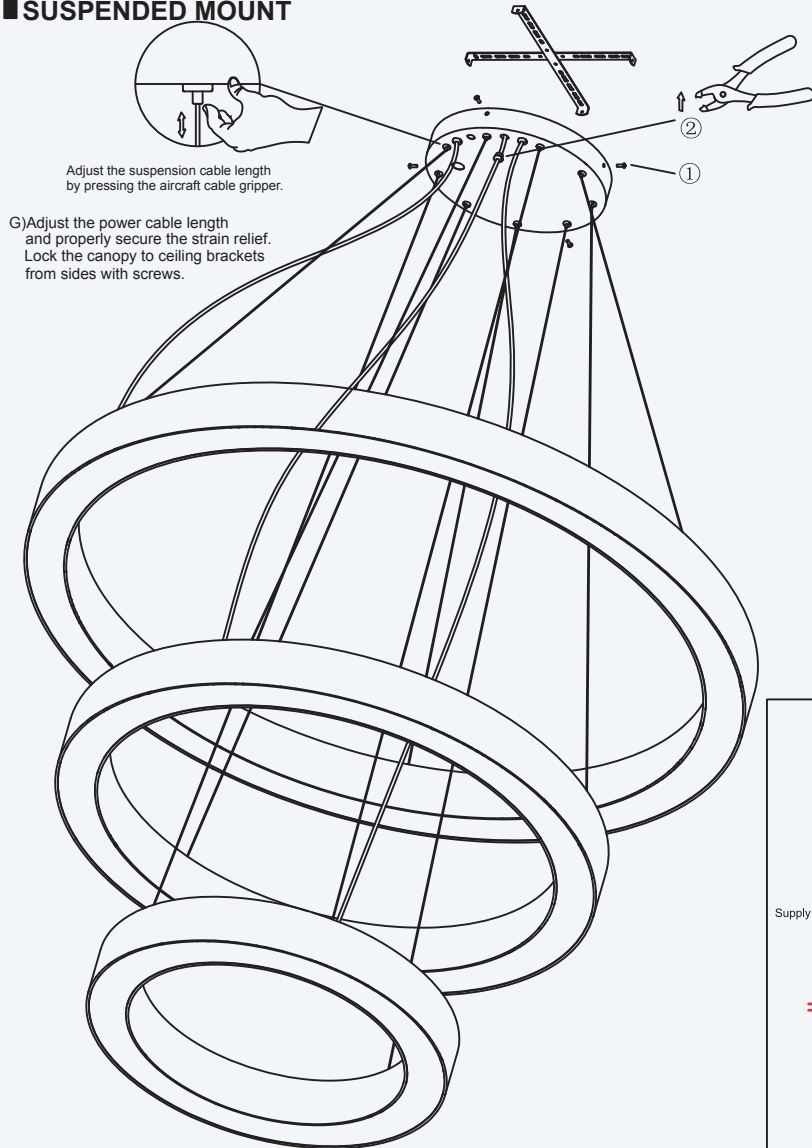
E) Drill holes in the ceiling for mounting the ceiling bracket. Each ceiling bracket requires 8 holes (Refer to L2 and L3 for the distance between the holes).



F) As shown in the picture, use screws to fix the ceiling bracket to the junction box and the ceiling as required.

## INSTALLATION INSTRUCTIONS

### ■ SUSPENDED MOUNT



Emergency kit option and sensor installation: Please connect according to the wiring method shown.