


Date		Project	
Type		Part Number	


 THE EVERYDAY COMPETITIVE OPTION

ORION Series

UFO Highbay



Our new generation LED highbays are ideal for replacing HID High Bay fixtures, offering high performance and long life. Designed precision spherical and convex lens and offers low brightness, uniform illumination and high efficiency LED platform. Designed with easy installation of sensors at the face of the fixture.



PRODUCT FEATURES

- NSF Compliant
- NEMA 4X Certified: Ensures the fixture is water-tight and can withstand extreme conditions
- Suitable for wet locations IP65 rated
- Mounting options: hook/chain and pole pendant
- Includes 6' cord, ring bolt mounting accessory & safety hanging kit
- With M10 threaded opening
- Polycarbonate Lens
- White Finish
- Operating temperature: -4°F to +122°F (-20°C to +50°C)
- Rated Lifespan: L70 ~100,000 hrs
- 5 year warranty

KEY SPECIFICATIONS

Voltage	120-347V
Wattage	Selectable Wattage: R1 - 100/125/150W R2 - 150/200/240W
Power Factor	>0.9
CCT	Selectable: 35/40/5000K
CRI	>80
Lumens	Up to 35,187 lm
Beam Angle	90°
Dimming	0-10V
Mounting	Pendant & Suspension
Applications	Commercial, Industrial, Warehouse, Retail Facilities


 STANDALONE
 SENSOR OPTIONS

 EMERGENCY
 BACKUP READY

 RENO SMART
 NLC SYSTEM


SPECIFICATIONS - R1 100/125/150W

Order#	Model	Wattage	Voltage	Lumens	Efficacy	CCT
R34223	RENO-HBU-150W-DV-MCCT-R1-ECO	100W	120-347V	16,045 lm	160 lm/W	3500K
				16,739 lm	167 lm/W	4000K
				16,070 lm	161 lm/W	5000K
		125W	120-347V	18,162 lm	145 lm/W	3500K
				19,212 lm	153 lm/W	4000K
				18,408 lm	147 lm/W	5000K
		150W	120-347V	22,509 lm	150 lm/W	3500K
				22,593 lm	151 lm/W	4000K
				22,079 lm	147 lm/W	5000K

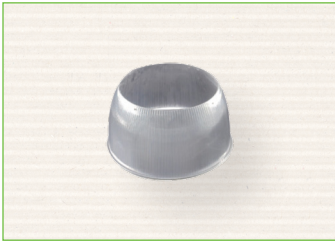
SPECIFICATIONS - R2 150/200/240W

Order#	Model	Wattage	Voltage	Lumens	Efficacy	CCT
R34224	RENO-HBU-240W-DV-MCCT-R2-ECO	150W	120-347V	24,371 lm	162 lm/W	3500K
				25,324 lm	168 lm/W	4000K
				24,384 lm	162 lm/W	5000K
		200W	120-347V	30,031 lm	150 lm/W	3500K
				31,880 lm	159 lm/W	4000K
				30,656 lm	153 lm/W	5000K
		240W	120-347V	34,320 lm	143 lm/W	3500K
				35,187 lm	146 lm/W	4000K
				34,080 lm	142 lm/W	5000K

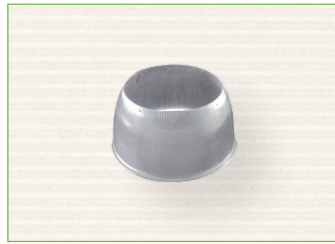
DLC CERTIFICATION

Order#	Model	Application	DLC Standard	DLC Premium
R34223	RENO-HBU-150W-DV-MCCT-R1-ECO	High-Bay Luminaires for Commercial and Industrial Buildings	–	S-41UH2V
R34224	RENO-HBU-240W-DV-MCCT-R2-ECO	High-Bay Luminaires for Commercial and Industrial Buildings	–	S-LNJT5X

ACCESSORIES – LENS



R34225
RENO-HBU-COVER-R1-ECO
PC Prismatic Reflector Lens



R34226
RENO-HBU-COVER-R2-ECO
PC Prismatic Reflector Lens

Order#	Model	Description
R34225	RENO-HBU-COVER-R1-ECO	PC Prismatic Reflector Lens for R1 UFO
R34226	RENO-HBU-COVER-R2-ECO	PC Prismatic Reflector Lens for R2 UFO

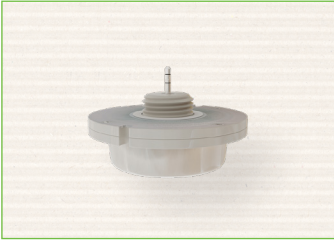
ACCESSORIES – EMERGENCY BACKUP



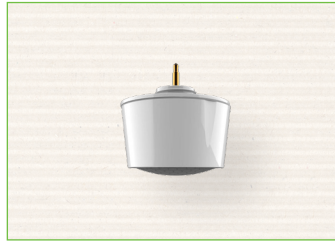
R83005
RENO-EM-40RM
Emergency LED Driver (100-347V AC, 50-60Hz, 40W)

Order#	Model	Description
R83005	RENO-EM-40RM	External Mount Emergency Driver (100-347V AC, 50-60Hz, 40W)

ACCESSORIES – STANDALONE SENSORS



R71002
RENO-SENSOR-MH-W
Microwave Sensor



R74004
RENO-SENSOR-PIR3.5-PH15M
Long Detection Range PIR
Sensor



R73002
RENO-REMOTE-H
Remote Control for Standalone
Sensors (With Screen)



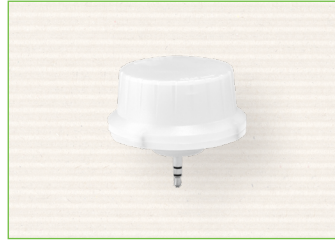
R73005
RENO-REMOTE-H-ECO
Remote Control for Standalone
sensors (Without Screen)

Order#	Model	Description
R71002	RENO-SENSOR-MH-W	Microwave Sensor
R74004	RENO-SENSOR-PIR3.5-PH15M	Long Detection Range PIR Sensor
R73002	RENO-REMOTE-H	Remote Control for Standalone Sensors (With Screen) Note: Only 1 needed per project
R73005	RENO-REMOTE-H-ECO	Remote Control for Standalone sensors (Without Screen) Note: Only 1 needed per project

ACCESSORIES – RENO SMART NLC SYSTEM



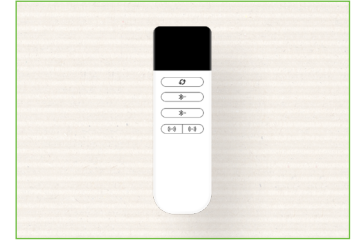
R75001
RENO-RS-JK-BPDN-12V
Bluetooth PIR sensor



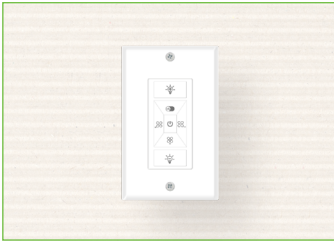
R75002
RENO-RS-JK-BMWM-12V
Bluetooth microwave sensor



R75201
RENO-RS-GW-BCNW
Bluetooth Ceiling mounted gateway



R75301
RENO-RS-RC-BNNN
Bluetooth Reset remote controller

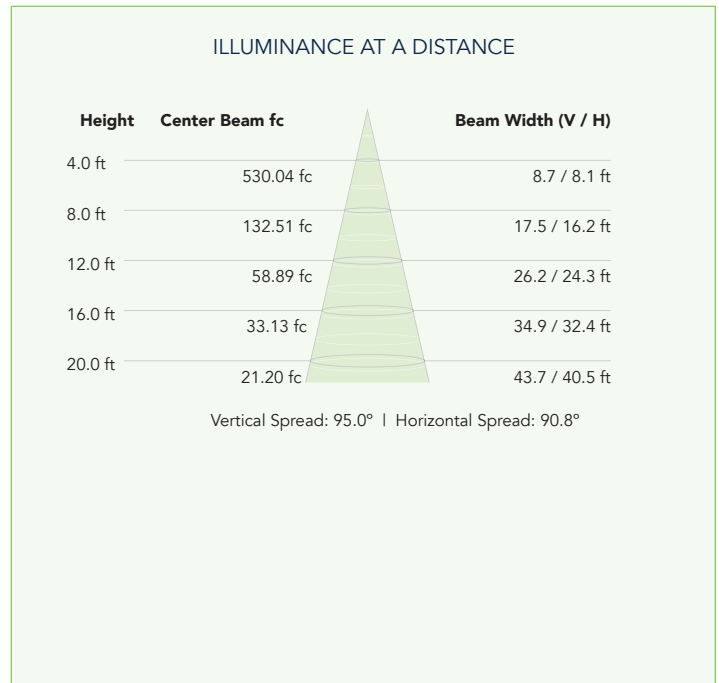
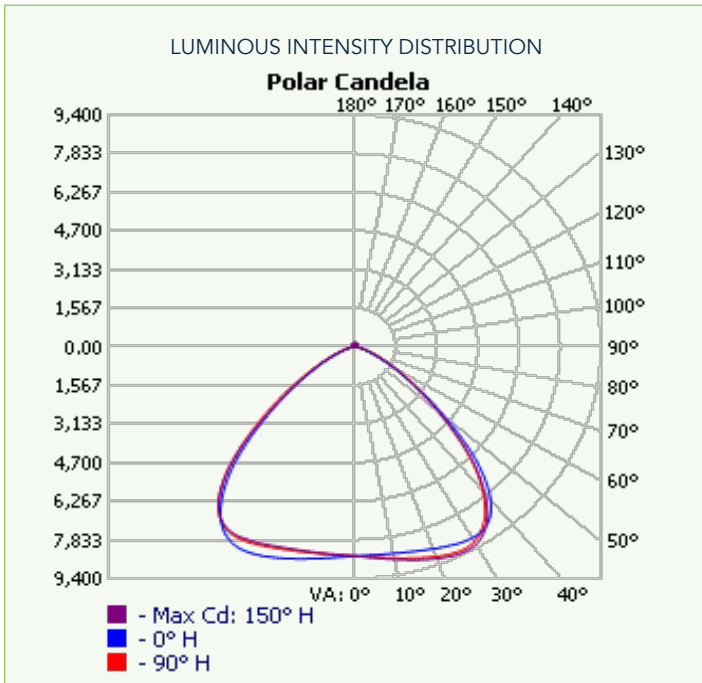


R75302
RENO-RS-RC-BNNG
Bluetooth 7-Key Smart Wall Switch

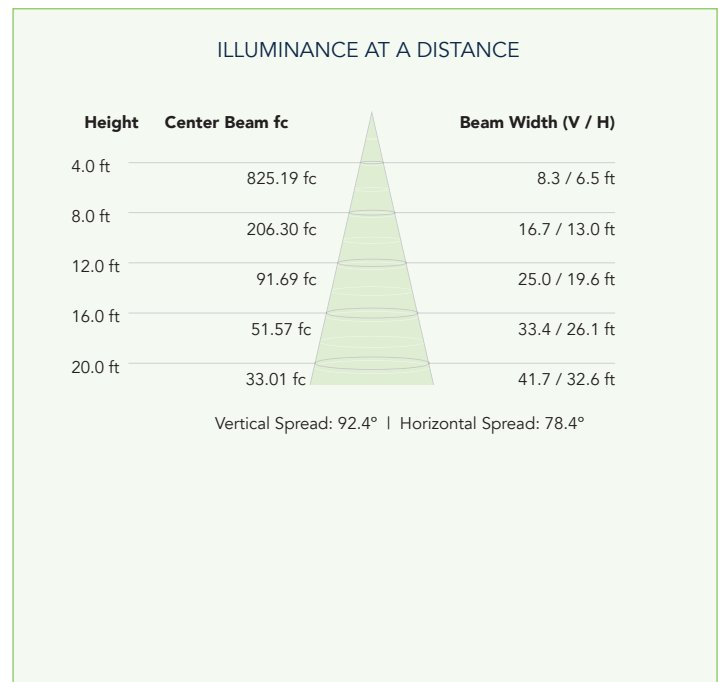
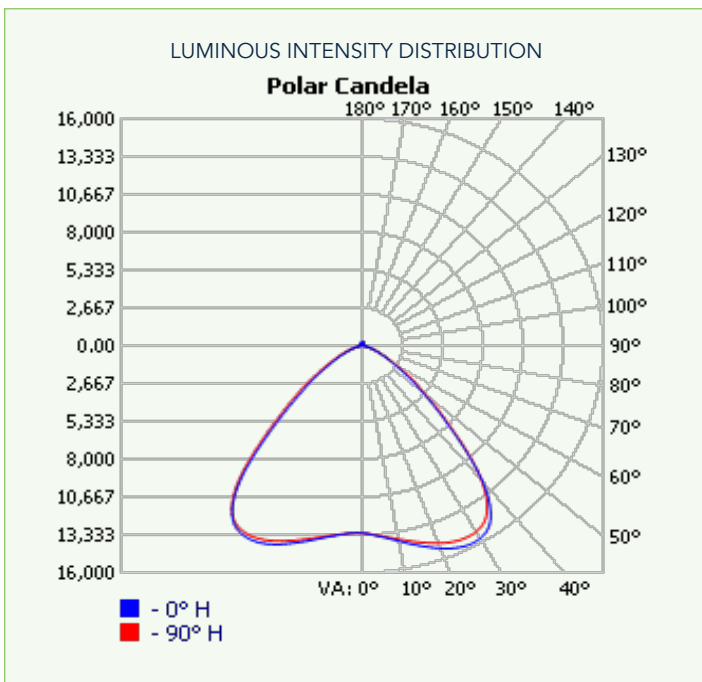
Order#	Model	Description
R75001	RENO-RS-JK-BPDN-12V	Bluetooth PIR sensor
R75002	RENO-RS-JK-BMWM-12V	Bluetooth microwave sensor
R75201	RENO-RS-GW-BCNW	Bluetooth Ceiling mounted gateway
R75301	RENO-RS-RC-BNNN	Bluetooth Reset remote controller
R75302	RENO-RS-RC-BNNG	Bluetooth 7-Key Smart Wall Switch

****All Reno Smart Sensors are programmed/commissioned using our Reno Smart App**

PHOTOMETRICS - R1 150W/4K

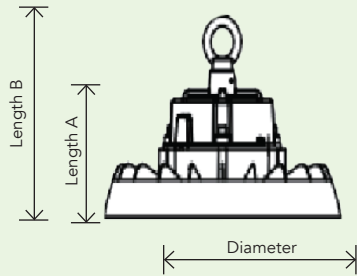


PHOTOMETRICS - R2 240W/4K



DIMENSIONS

R1 - 100/125/150W RINGS

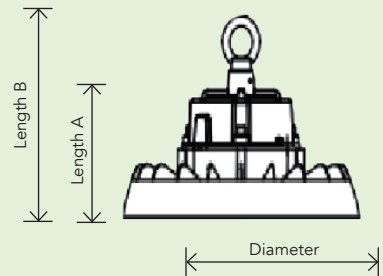


Diameter: 10.4" (264.8 mm)
Length A: 6.3" (160.6 mm)
Length B: 4.6" (116.8 mm)

Weight: 3 lbs (1.36 kg)

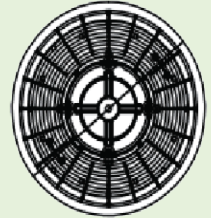


R2 - 150/200/240W RINGS

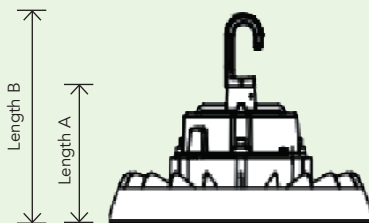


Diameter: 12.8" (325.7 mm)
Length A: 6.5" (165.1 mm)
Length B: 4.8" (121.3 mm)

Weight: 4 lbs (1.81 kg)

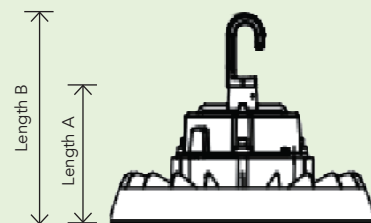


R1 - 100/125/150W HOOKS



Length A: 7.1" (181.5 mm)
Length B: 4.6" (116.8 mm)

R2 - 150/200/240W HOOKS



Length A: 7.3" (186.0 mm)
Length B: 4.8" (121.3 mm)