

<b>Date</b>		<b>Project</b>	
<b>Type</b>		<b>Part Number</b>	

# OPS Series

## Traditional Wall Pack

The OPS Series PRIME LED Traditional Wall Pack uses industry-leading LED chips and drivers to deliver a quality, energy saving lighting solution. It is also designed for an easy install, directly fitting onto existing electrical boxes, making it the contractor's choice when replacing older high pressure sodium and metal halide wall packs.



## PRODUCT FEATURES

- DLC Premium
- Die-Cast Aluminum Alloy Body
- Powder-coated Finish
- Custom colours available
- Glass Lens
- Optional button photocell available. Note: The photocell must be installed in the designated knockout located on the side of the fixture to ensure proper functionality and light sensing
- Rated IP65
- Operating temperature: -40°F to +122°F (-40°C to +50°C)
- Available Flushmount DC Sensor
- Rated Lifespan: L70 ~100,000 hrs
- 10 year limited warranty

## KEY SPECIFICATIONS

<b>Voltage</b>	120-347V
<b>Wattage</b>	Selectable Wattage: R1 - 30/40/50W R2 - 45/60/75W R3 - 72/96/120W
<b>CCT</b>	Selectable: 3500K, 4000K, 5000K
<b>CRI</b>	>80
<b>Power Factor</b>	>0.9
<b>Lumens</b>	Up to 16,200 lm
<b>Default Fixture Setting</b>	R1 - 50W @ 4000K R2 - 75W @ 4000K R3 - 120W @ 4000K
<b>Beam Angle</b>	110°
<b>Dimming</b>	0-10V
<b>Mounting</b>	Surface, Wall
<b>Applications</b>	Commercial, Hospitals, Warehouse, Schools

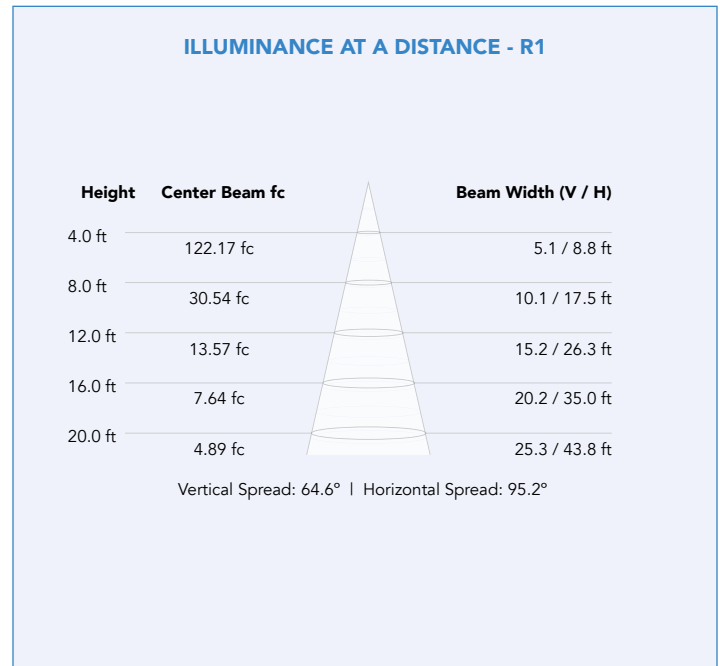
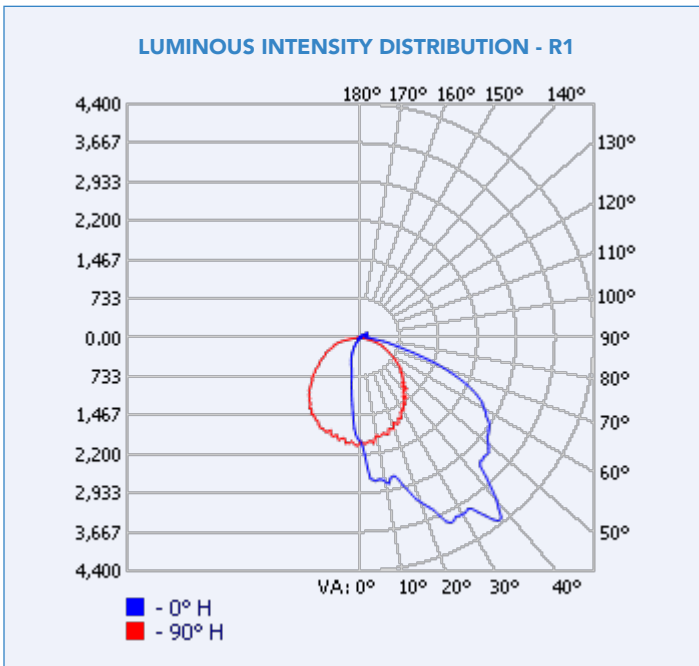
## SPECIFICATIONS

Order#	Model	Wattage	Voltage	Lumens	Efficacy	CCT	Finish
R51024	RENO-WP-MW-DV-MCCT-R1	30W/40W/50W	120-347V	4,050/5,400/6,750lm	135lm/W	30K/40K/50K	Black
R51025	RENO-WP-MW-DV-MCCT-R2	45W/60W/75W	120-347V	6,075/8,100/10,125lm	135lm/W	30K/40K/50K	Black
R51026	RENO-WP-MW-DV-MCCT-R3	72W/96W/120W	120-347V	9,720/12,960/16,200lm	135lm/W	30K/40K/50K	Black
R51029	RENO-WP-MW-DV-MCCT-R2-WH	45W/60W/75W	120-347V	6,075/8,100/10,125lm	135lm/W	30K/40K/50K	White

## DLC CERTIFICATION

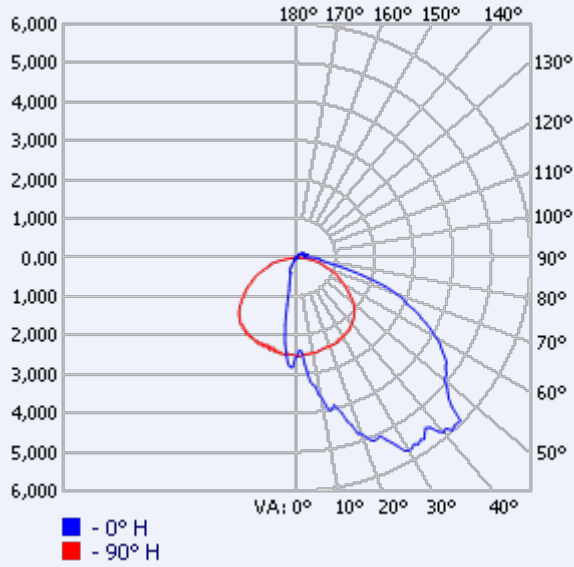
Order#	Model	Application	DLC Standard	DLC Premium
R51024	RENO-WP-MW-DV-MCCT-R1	Outdoor Non-Cutoff and Semi-Cutoff Wall-Mounted Area Luminaires	-	S-X6N82F
R51025	RENO-WP-MW-DV-MCCT-R2	Outdoor Non-Cutoff and Semi-Cutoff Wall-Mounted Area Luminaires	-	S-NIOL7B
R51026	RENO-WP-MW-DV-MCCT-R3	Outdoor Non-Cutoff and Semi-Cutoff Wall-Mounted Area Luminaires	-	S-ZVGF0R
R51029	RENO-WP-MW-DV-MCCT-R2-WH	Outdoor Non-Cutoff and Semi-Cutoff Wall-Mounted Area Luminaires	-	S-NIOL7B

## PHOTOMETRICS



**PHOTOMETRICS**

**LUMINOUS INTENSITY DISTRIBUTION - R2**

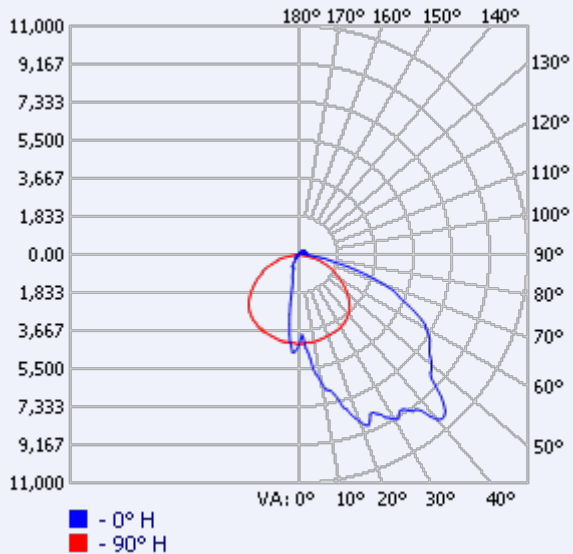


**ILLUMINANCE AT A DISTANCE - R2**

Height	Center Beam fc	Beam Width (V / H)
4.0 ft	157.97 fc	4.9 / 8.8 ft
8.0 ft	39.49 fc	9.8 / 17.5 ft
12.0 ft	17.55 fc	14.6 / 26.3 ft
16.0 ft	9.87 fc	19.5 / 35.0 ft
20.0 ft	6.32 fc	24.4 / 43.8 ft

Vertical Spread: 62.7° | Horizontal Spread: 95.1°

**LUMINOUS INTENSITY DISTRIBUTION - R3**

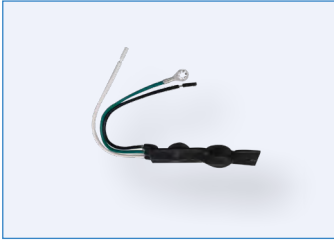


**ILLUMINANCE AT A DISTANCE - R3**

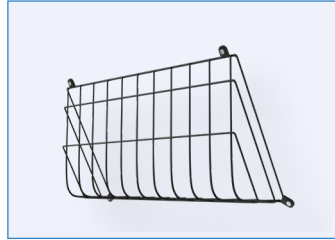
Height	Center Beam fc	Beam Width (V / H)
4.0 ft	270.14 fc	4.7 / 8.2 ft
8.0 ft	67.54 fc	9.4 / 16.3 ft
12.0 ft	30.02 fc	14.2 / 24.5 ft
16.0 ft	16.88 fc	18.9 / 32.6 ft
20.0 ft	10.81 fc	23.6 / 40.8 ft

Vertical Spread: 61.1° | Horizontal Spread: 91.1°

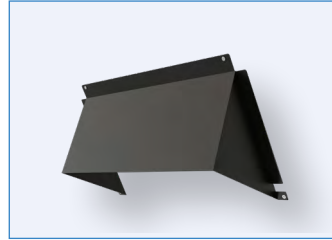
## ACCESSORIES



R59009  
RENO-WP-SP  
10KA Surge Protector



R59007  
RENO-WALL-PACK-WIRE-GUARD  
Wall Pack Wire Guard



R59008  
RENO-WP-SHIELD  
Wall Pack Shield

Order#	Model	Description
R59009	RENO-WP-SP	10KA Surge Protector
R59007	RENO-WALL-PACK-WIRE-GUARD	Wall Pack Wire Guard (R1&R2&R3)
R59008	RENO-WP-SHIELD	Wall Pack Shield (Can be painted to match white)

## ACCESSORIES – SENSORS



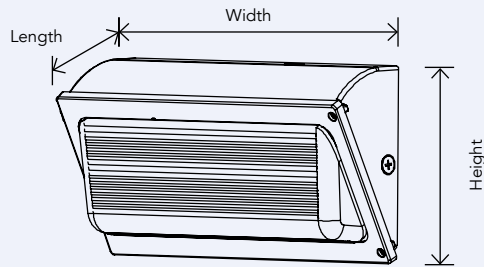
R59101  
RENO-WP-PS  
DC Button Photocell

Order#	Model	Description
R59101	RENO-WP-PS	DC Button Photocell

\*\*Note: The photocell must be installed in the designated knockout located on the side of the fixture to ensure proper functionality and light sensing

## DIMENSIONS

### R1/R2/R3



Width: 14" (355.6 mm)

Height: 8.8" (223.5 mm)

Length: 4.8" (120 mm)

Weight: 7.5 lbs (3.4 kg)